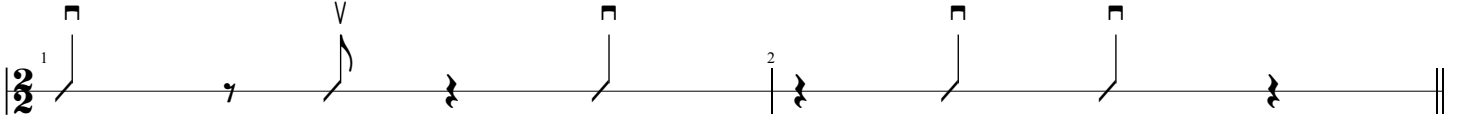


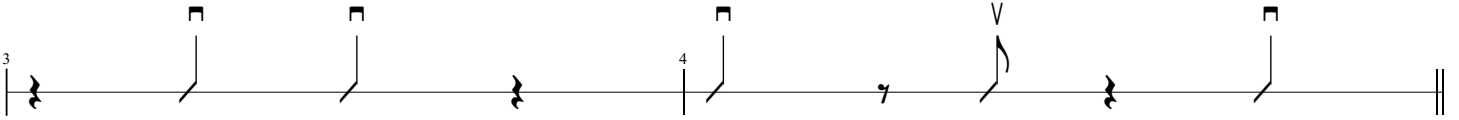
# Clave

www.gitarrenkurse-online.com

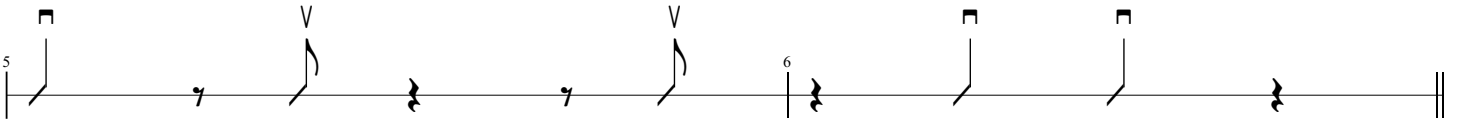
## Son Clave (3 - 2)



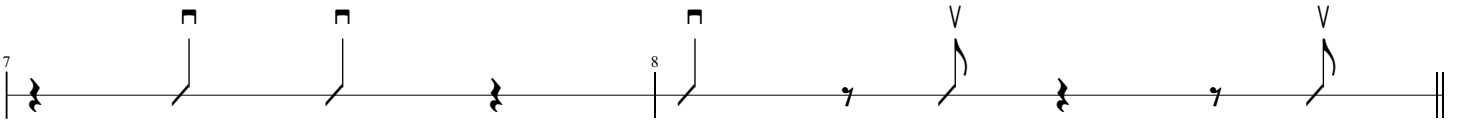
## Son Clave (2 - 3)



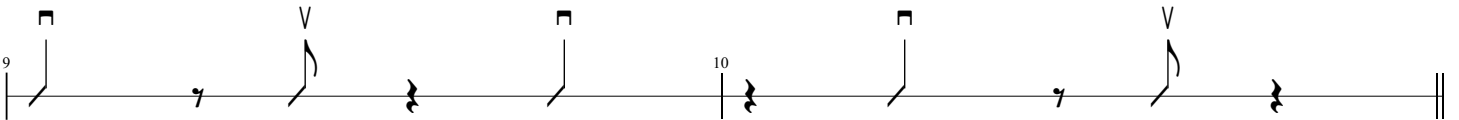
## Rumba Clave (3 - 2)



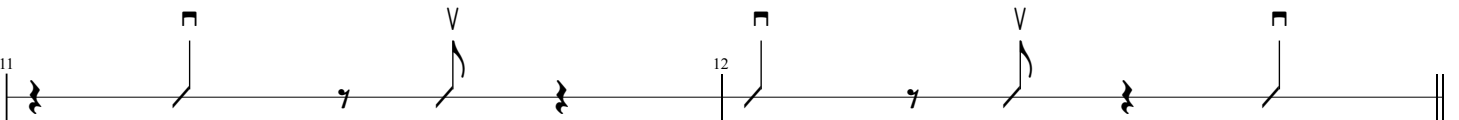
## Rumba Clave (2 - 3)



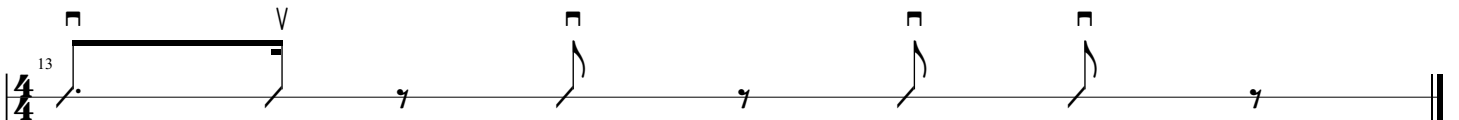
## Bossa Clave (3 - 2)



## Bossa Clave (2 - 3)



## Notation in 4/4 auf 16tel Ebene (z.B. Son Clave 3 - 2)



# Salsa | Montuno

www.gitarrenkurse-online.com

## 1." 2-3" Clave | Montuno Basic Pattern

Montuno

Clave

Detailed description: This section shows the basic Montuno guitar pattern. It consists of two staves: Montuno (top) and Clave (bottom). The Montuno staff has a treble clef and a 2/2 time signature. It features a sequence of notes: quarter notes on G4, A4, B4, and C5, followed by eighth notes on B4, A4, G4, and F4. There are two measures, with a '2' above the second measure. The Clave staff has a bass clef and a 2/2 time signature, showing a 2-3 clave pattern with quarter notes on C3, G2, and C3, followed by eighth notes on B2, A2, G2, and F2. Fretboard diagrams and tablature are provided for both parts.

## Beispiel 1.1. "Line Cliché"

Am

Detailed description: This example shows a melodic line in Am. The Montuno staff has a treble clef and a 2/2 time signature. The melodic line starts on G4, moves to A4, B4, and C5 in the first measure, then B4, A4, G4, and F4 in the second measure. Fretboard diagrams and tablature are provided. The Clave staff has a bass clef and a 2/2 time signature, showing a 2-3 clave pattern with quarter notes on C3, G2, and C3, followed by eighth notes on B2, A2, G2, and F2.

G

Detailed description: This example shows an arpeggiated melodic line in G. The Montuno staff has a treble clef and a 2/2 time signature. The arpeggiated line starts on G4, moves to A4, B4, and C5 in the first measure, then B4, A4, G4, and F4 in the second measure. Fretboard diagrams and tablature are provided. The Clave staff has a bass clef and a 2/2 time signature, showing a 2-3 clave pattern with quarter notes on C3, G2, and C3, followed by eighth notes on B2, A2, G2, and F2.

## Beispiel 1.2. "Arpeggio"

A7

Dm

Detailed description: This example shows an arpeggiated melodic line in A7 and Dm. The Montuno staff has a treble clef and a 2/2 time signature. The arpeggiated line starts on A4, moves to B4, C5, and D5 in the first measure, then C5, B4, A4, and G4 in the second measure. Fretboard diagrams and tablature are provided. The Clave staff has a bass clef and a 2/2 time signature, showing a 2-3 clave pattern with quarter notes on C3, G2, and C3, followed by eighth notes on B2, A2, G2, and F2.

**Beispiel 1.3. "Akkorderweiterungen, z.B. mit Sexte"**

**Am**

9 10

Montuno

Clave

**G**

11 12

Clave

**2. "2-3" Clave / Montuno / Basic Pattern / Variation**

13 14

Clave

**Beispiel 2.1. "Line Cliché"**

**Am**

15 16

Clave

Montuno

Clave

**G**

17 18

T  
A  
B

5 4 3 4 3 2 (2) 3 4 4 3

**Beispiel 2 / "Arpeggio"**

**C F G F C**

19 20

T  
A  
B

5 5 6 6 8 (8) 8 6 6 5  
5 5 7 5 7 (7) 7 5 5  
5 5 7 5 9 (9) 7 7 5 5