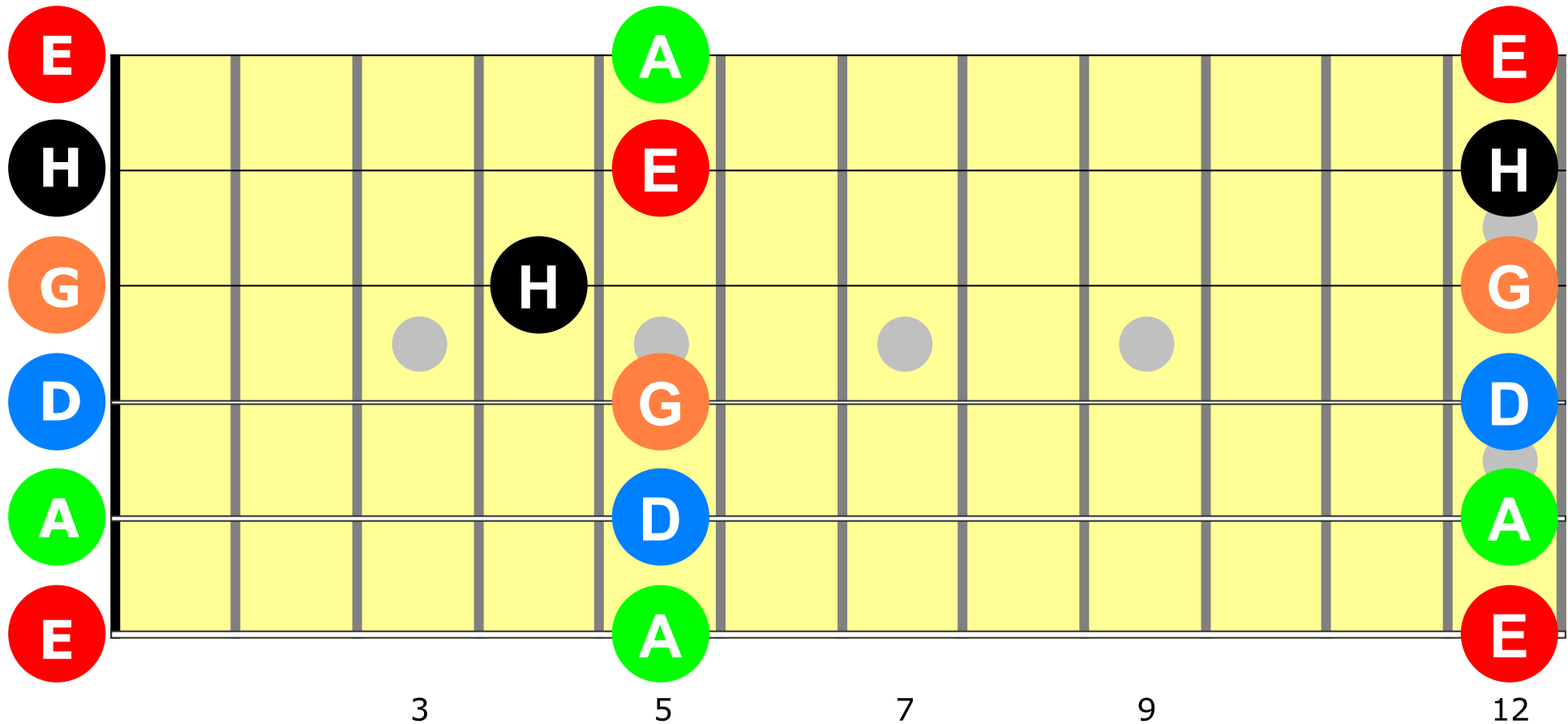


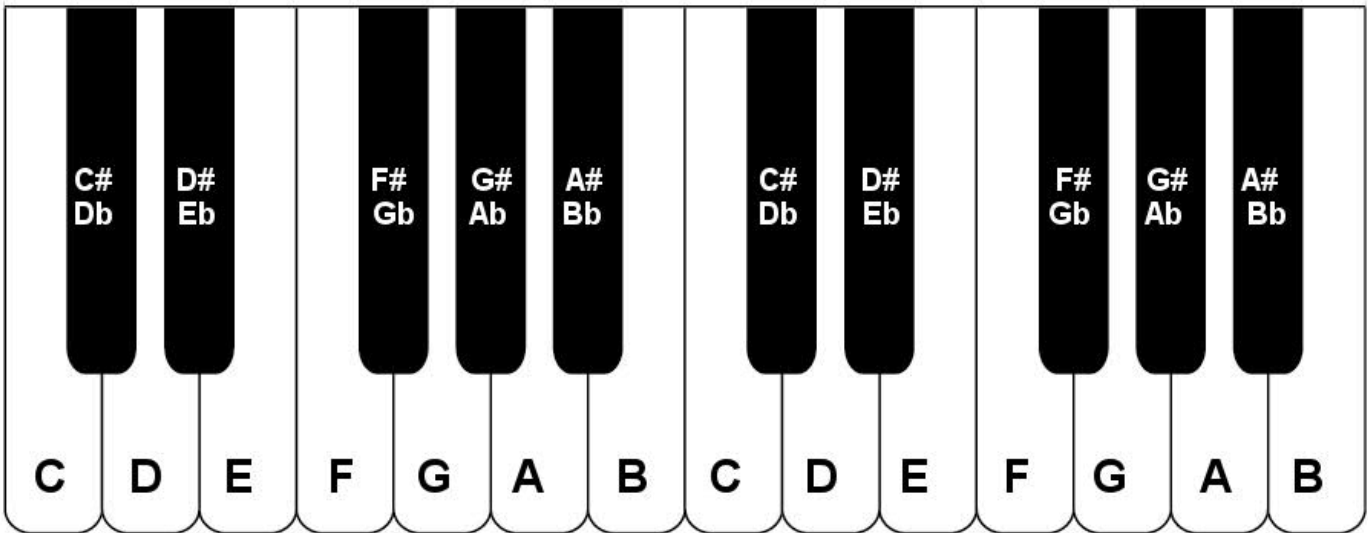
Griffbrett - Orientierung



Die 12 Töne

C - C# - D - D# - E - F - F# - G - G# - A - A# - H - C
Db Eb Gb Ab Bb

Tonsystem international

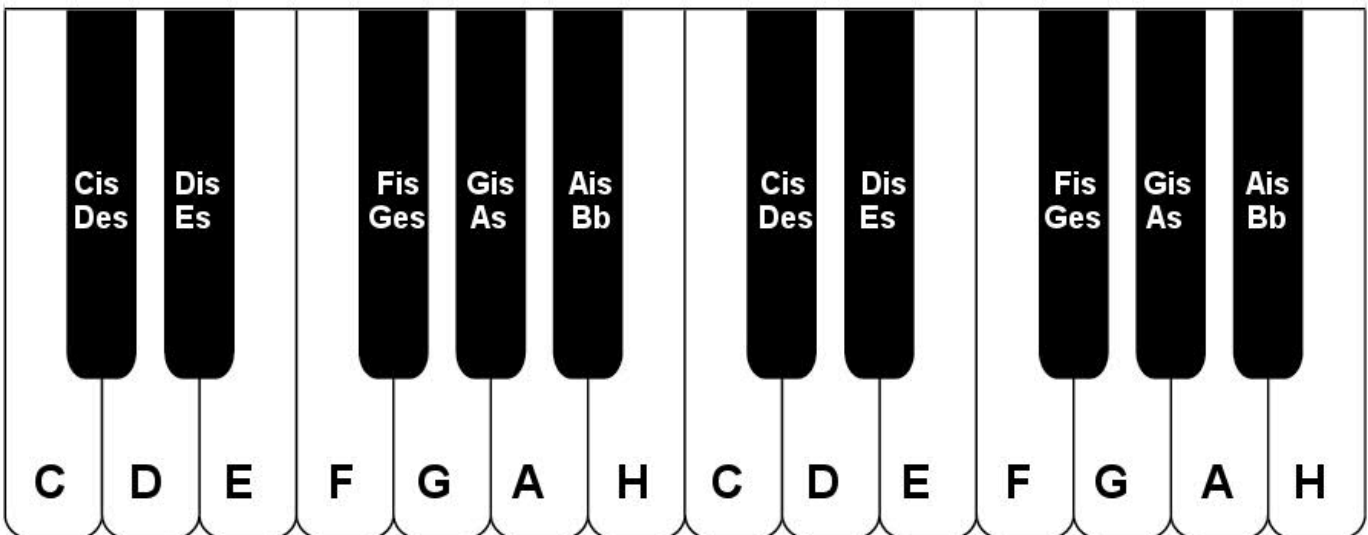


Internationale Bezeichnung:

C# = " C sharp "

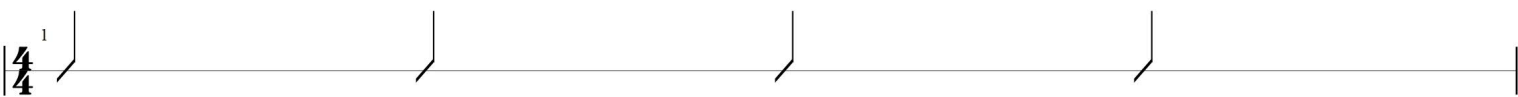
Db = " D flat "

Tonsystem Deutschland



Vorschläge für Rhythmusbausteine

Viertel



Achtel



Sechzehntel



Synkopierte Rhythmen, z.B. "Tresillo"

